



STEPHENSON WAY

Corby, Northamptonshire, NN17 1DF | £160,000



"Ripe for refurbishment and offered with no chain"



Stephenson Way, Corby, NN17 1DF

Ripe for refurbishment. This established two bedroom semi-detached property is situated within the ever popular Lloyds estate and is offered with No Chain. The property requires full refurbishment and the accommodation includes: entrance hall, living room, kitchen, bathroom, landing and 2 bedrooms. Features include double glazing and gas radiator central heating (untested). Outside are front and rear gardens plus a driveway providing Off Road Parking and a Garage. Call today to arrange a viewing.

Ground Floor: Entrance door opens to entrance hall with stairs rising to first floor and doors to ground floor rooms. The spacious living room has windows to front and rear. The kitchen has a window and door to the side and a door to under-stairs cupboard. A further door leads into the bathroom which has a 3 piece suite and a window to the rear.

First Floor: the landing provides access to both bedrooms. Bedroom 1 is a spacious double room with windows to front and rear. Bedroom 2 is another double room with a window to side.

Outside: The frontage is laid to lawn with low walling. A driveway to the side provides Off Road Parking Space. The driveway leads to a Garage although it should be noted the driveway is narrow. The rear garden is in need of further cultivation.



2  bedrooms 1  bathrooms
1  receptions

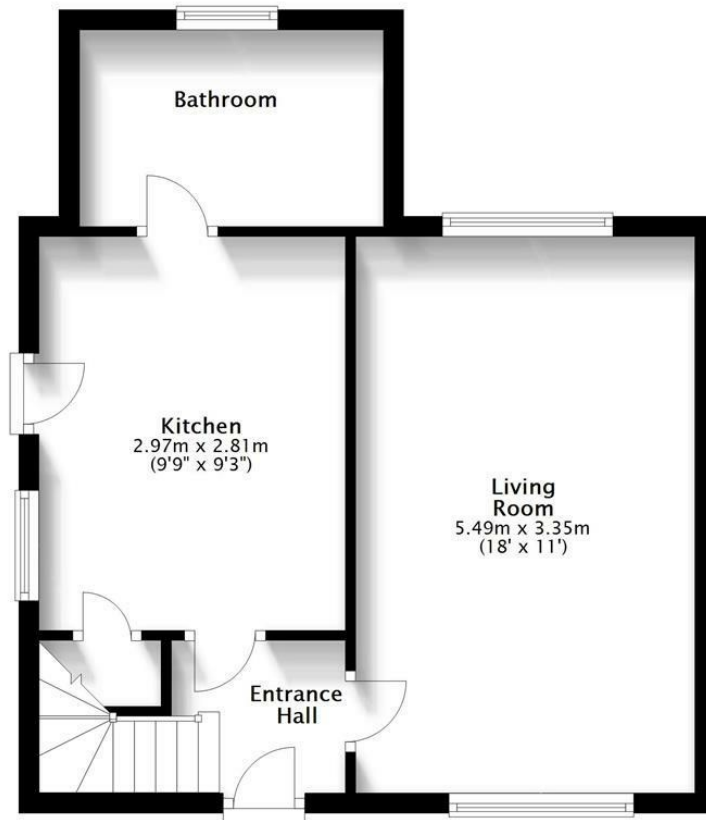
Council Tax Authority: North Northants

Tenure: Freehold

Energy Efficiency Rating: null

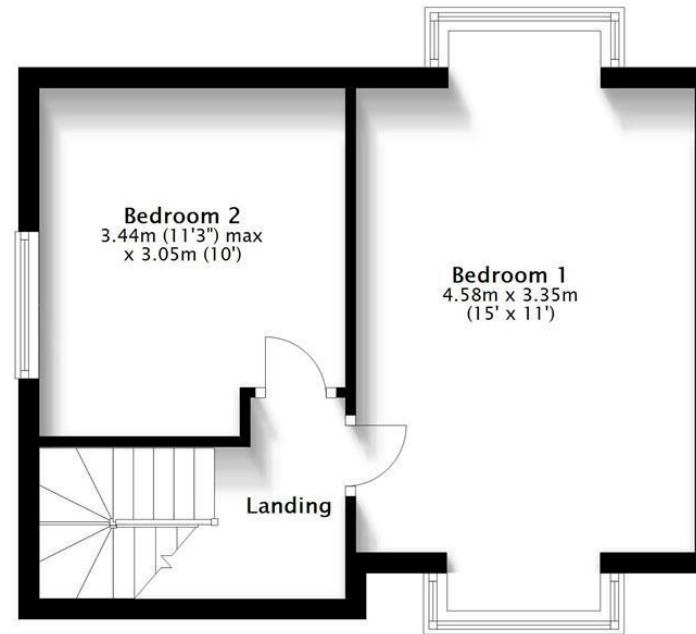
Ground Floor

Approx. 34.7 sq. metres (373.6 sq. feet)



First Floor

Approx. 31.8 sq. metres (342.0 sq. feet)



Total area: approx. 66.5 sq. metres (715.6 sq. feet)



HOWE
RESIDENTIAL

e: sales@howeresidential.co.uk t: 01536 268844 www.howeresidential.co.uk

Howe Residential & their clients give notice that: **1.** These sales and particulars do not constitute any part of an offer of contract, and are for the guidance of prospective purchasers only and should not be relied on as statements of fact. **2.** No representations are made in these particulars as to the condition of the property or as to whether any service or facilities are in good working order. **3.** All Measurements are approximate.