



SISKIN CLOSE

Corby, NN14 4BL

£925 Per Calendar Month

Premier

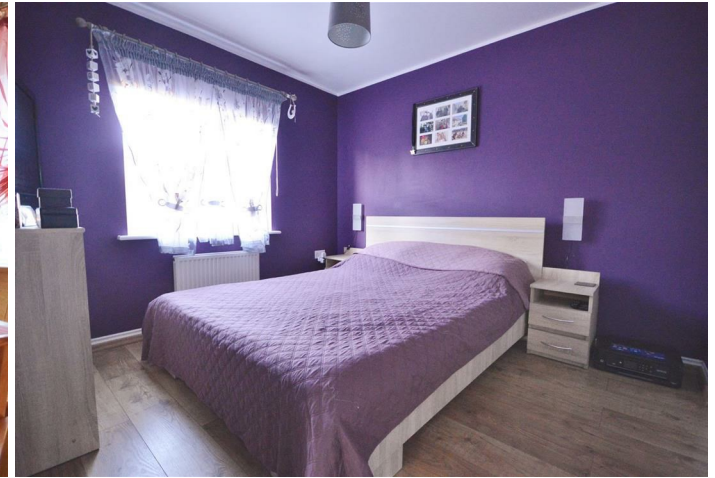
LETTINGS NORTHANTS




Move-in Ready! This superb three bedroom end of terrace property is situated in this sought after location close to the local schools and amenities on the Oakley Vale development. Offered with no chain, features include a contemporary kitchen/breakfast room, downstairs WC and living/dining room. Upstairs offers the three bedrooms with a contemporary en-suite to the master bedroom and a further family bathroom. There is a covered lean-to at the rear of the property and well maintained gardens. A driveway provides off road parking leading to a GARAGE. Not to be missed!



Siskin Close, Corby, NN18 8RQ

This modern three bedroom end of terrace property is situated in this sought after location close to the local schools and amenities on the Oakley Vale development. Features include a contemporary kitchen/breakfast room, downstairs WC and living/dining room. Upstairs offers the three bedrooms with a contemporary en-suite to the master bedroom and a further family bathroom. There is a covered lean-to at the rear of the property and enclosed rear gardens. A driveway provides off road parking leading to a GARAGE. Available early January 2023. No Pets/Smokers



3  bedrooms 2  bathrooms
1  receptions

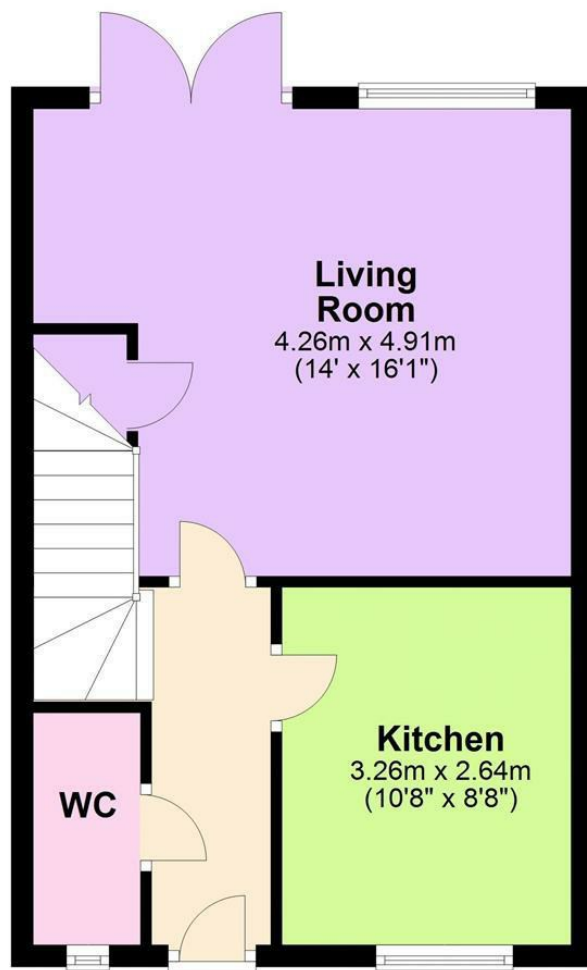
Council Tax Authority:

Tenure:

Energy Efficiency Rating:

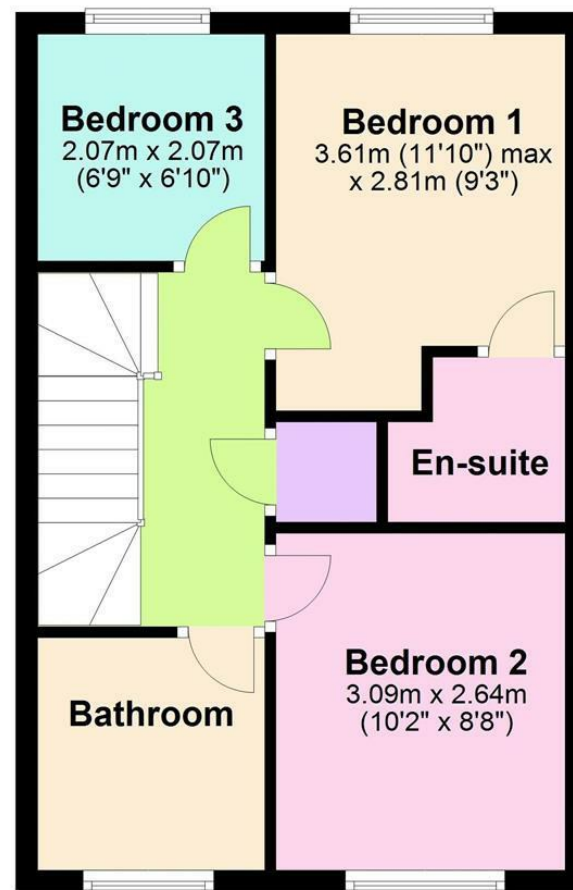
Ground Floor

Approx. 37.4 sq. metres (402.7 sq. feet)



First Floor

Approx. 38.3 sq. metres (412.7 sq. feet)



Total area: approx. 75.8 sq. metres (815.4 sq. feet)

Covering Northamptonshire

01536 684449 premierlettingsnorthants.co.uk

Disclaimer: These particulars should not be relied upon as statements or representations of fact and do not form part of any offer or contract. Any areas and measurements of distance are approximate. The text, images and plans are intended for guidance only and are not comprehensive.

Premier
LETTINGS NORTHANTS