



GRENVILLE CLOSE

Corby, Northamptonshire, NN17 2RP | £175,000



HOWE
RESIDENTIAL

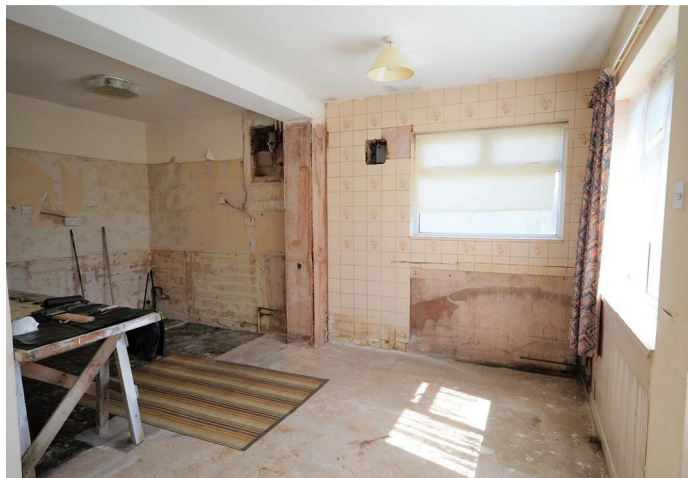
' requires modernisation but
offers lots of potential '



Grenville Close, Corby, NN17 2RP

A Blank Canvas ! This semi detached dormer bungalow is situated in this sought after cul-de-sac is available to CASH BUYERS ONLY as it requires full refurbishment, but offers the scope to create your perfect home. The property has been extended and currently offers three bedrooms, a living/dining room and a generous space for a kitchen/breakfast room. Outside, a driveway leads to a detached garage, whilst there are generous southerly established gardens to the rear. Offered with no chain. Call today!

The front door opens into a porch which then leads into an entrance hall with doors leading to the downstairs rooms. The living/dining room has a bay window to the front, feature fireplace, stairs leading to the first floor and a doorway leading through to the kitchen/breakfast room. The kitchen/breakfast room has windows and a glazed door opening out to the rear garden but has no fitted cupboards or units. Bedroom two is a double room with a window to the front. The bathroom has no functioning fittings and a window to the rear. Upstairs, there are two bedrooms with dormer window to the rear and built in cupboards. The front of the property provides a driveway leading to a garage. The rear garden has a sunny aspect and is mostly laid to lawn and enclosed by fencing.



3  bedrooms 1  bathrooms
1  receptions

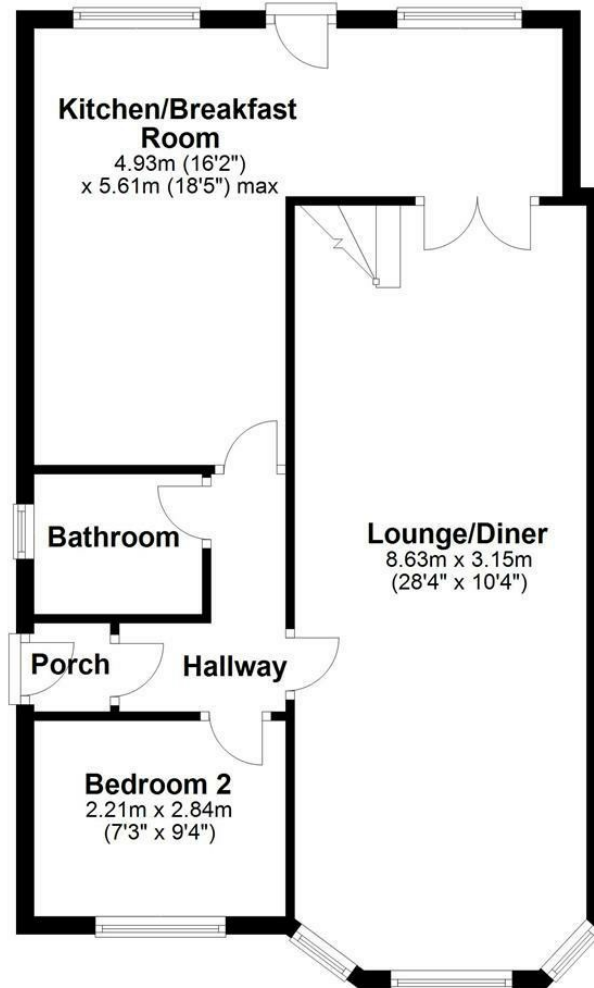
Council Tax Authority: North Northants

Tenure: Freehold

Energy Efficiency Rating: null

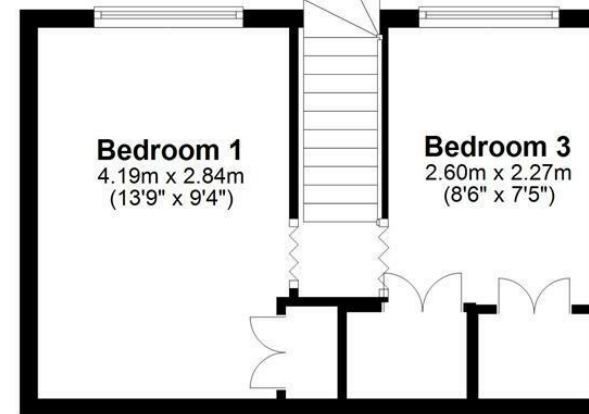
Ground Floor

Approx. 62.4 sq. metres (671.7 sq. feet)



First Floor

Approx. 25.8 sq. metres (277.7 sq. feet)



Total area: approx. 88.2 sq. metres (949.4 sq. feet)



HOWE
RESIDENTIAL

e: sales@howeresidential.co.uk t: 01536 268844 www.howeresidential.co.uk

Howe Residential & their clients give notice that: **1.** These sales and particulars do not constitute any part of an offer of contract, and are for the guidance of prospective purchasers only and should not be relied on as statements of fact. **2.** No representations are made in these particulars as to the condition of the property or as to whether any service or facilities are in good working order. **3.** All Measurements are approximate.