



STEPHENSON WAY

Corby, Northamptonshire, NN17 1DD | £200,000



HOWE
RESIDENTIAL



Stephenson Way, Corby, NN17 1DD

Bags of Potential ! Situated in this sought after location, this traditional 'Lloyds' semi detached property has already been extended but still offers plenty of scope for further improvement. Features include an 18ft living room, separate dining room extension, further kitchen extension and a shower room/wc. Upstairs offers two double bedrooms. The generous lawned frontage provides potential for off road parking (subject to relevant consents), whilst the larger than average rear garden also has a timber shed. Viewing is recommended.



2  bedrooms 1  bathrooms
2  receptions

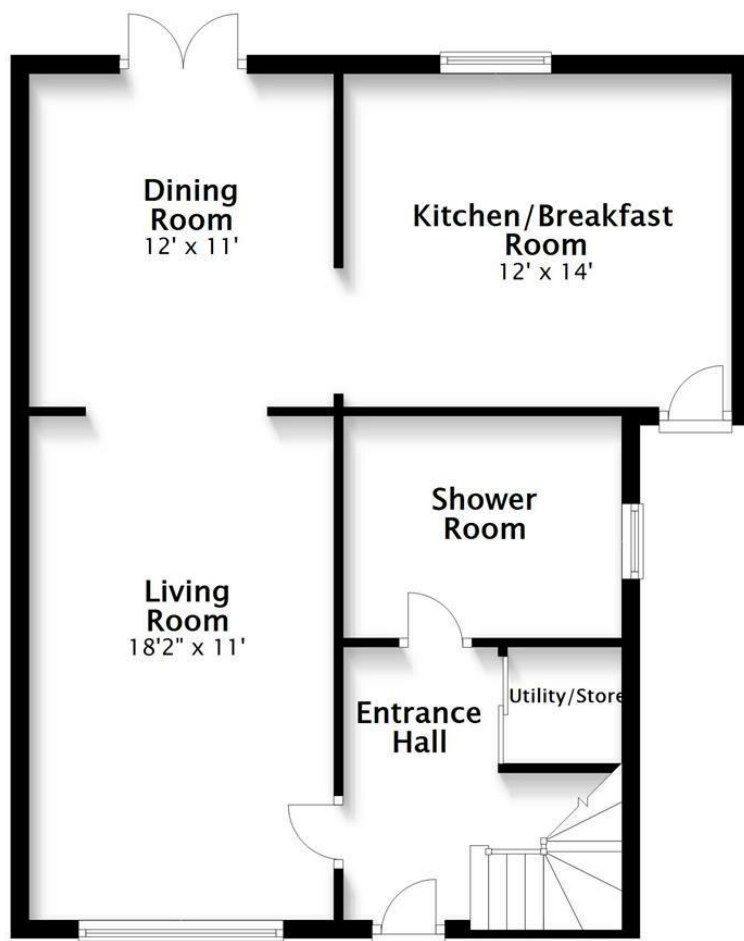
Council Tax Authority: North Northants

Tenure: Freehold

Energy Efficiency Rating: null

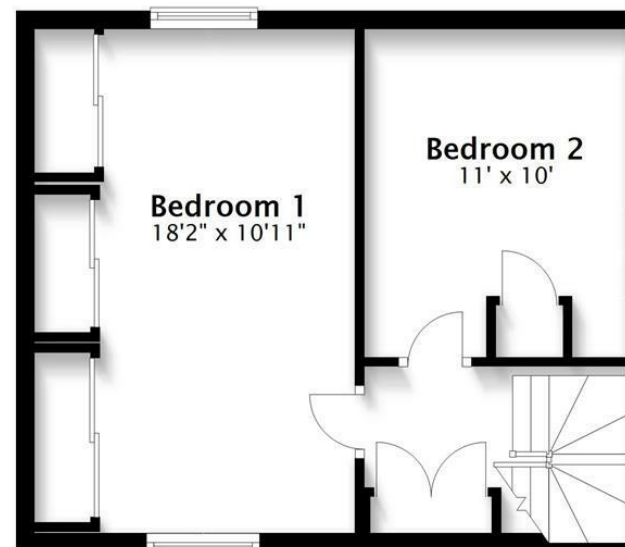
Ground Floor

Approx. 699.4 sq. feet



First Floor

Approx. 388.3 sq. feet



Total area: approx. 1087.7 sq. feet



HOWE
RESIDENTIAL

e: sales@howeresidential.co.uk t: 01536 268844 www.howeresidential.co.uk

Howe Residential & their clients give notice that: **1.** These sales and particulars do not constitute any part of an offer of contract, and are for the guidance of prospective purchasers only and should not be relied on as statements of fact. **2.** No representations are made in these particulars as to the condition of the property or as to whether any service or facilities are in good working order. **3.** All Measurements are approximate.