



ROCKINGHAM MEWS

Stephenson Way, Corby, Northamptonshire, NN17 1BB | £118,000



'Impressive Accommodation
Over Two Floors in a
Convenient Location'



Rockingham Mews, Stephenson Way, Corby, NN17 1BB

Ideally Located! This two bedroom split level maisonette is situated on the outskirts of Corby's historic Old Village and all of the amenities that it has to offer including the train station. Entering via your own front door, features include a 16 ft open plan kitchen/living room, two double bedrooms and a fitted bathroom. Further benefits to include double glazing and electric heating. Offered with no chain.

ENERGY RATING: E COUNCIL TAX BAND: B

The front door opens into an entrance hall with stairs rising to the first floor. The first floor landing has stairs rising to the second floor and doors to the kitchen/living room and bedroom 2. The open plan kitchen/living room is fitted with a range of units and has windows to the front. Bedroom two is a double room with a window to the rear and fitted cupboard. The second floor landing has a built-in airing cupboard and doors to the top floor rooms. Bedroom one is a generous sized double room with a velux window to the front and under eaves storage cupboard. The bathroom is fitted with a coloured suite and has a velux window to the rear.



2  bedrooms 1  bathrooms
1  receptions

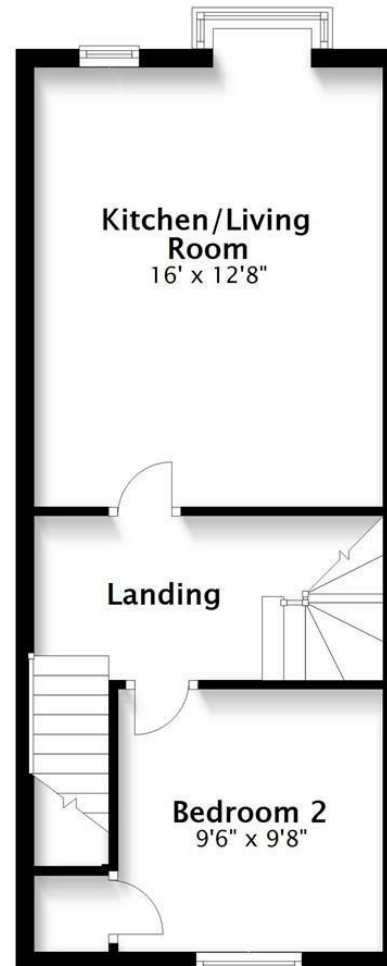
Council Tax Authority: North Northants

Tenure: Leasehold

Energy Efficiency Rating: 48

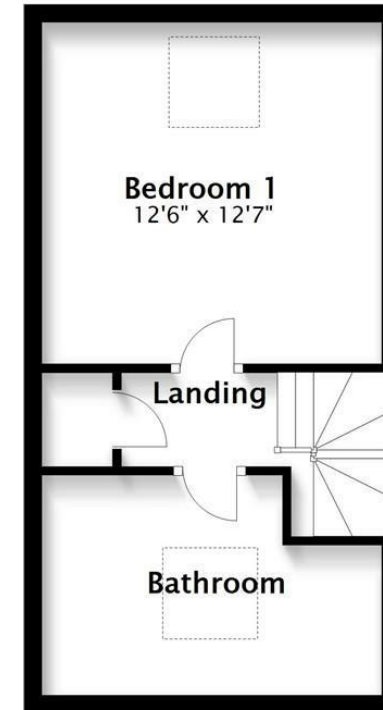
First Floor

Approx. 410.0 sq. feet



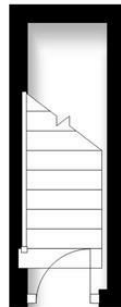
Second Floor

Approx. 303.0 sq. feet



Ground Floor

Approx. 28.3 sq. feet



Total area: approx. 741.3 sq. feet



HOWE
RESIDENTIAL

e: sales@howeresidential.co.uk t: 01536 268844 www.howeresidential.co.uk

Howe Residential & their clients give notice that: **1.** These sales and particulars do not constitute any part of an offer of contract, and are for the guidance of prospective purchasers only and should not be relied on as statements of fact. **2.** No representations are made in these particulars as to the condition of the property or as to whether any service or facilities are in good working order. **3.** All Measurements are approximate.