



RIDDING CLOSE

Corby, Northamptonshire, NN18 8EH | £200,000



' A great first purchase
situated in a sought-after
location '



Ridding Close, Corby, NN18 8EH

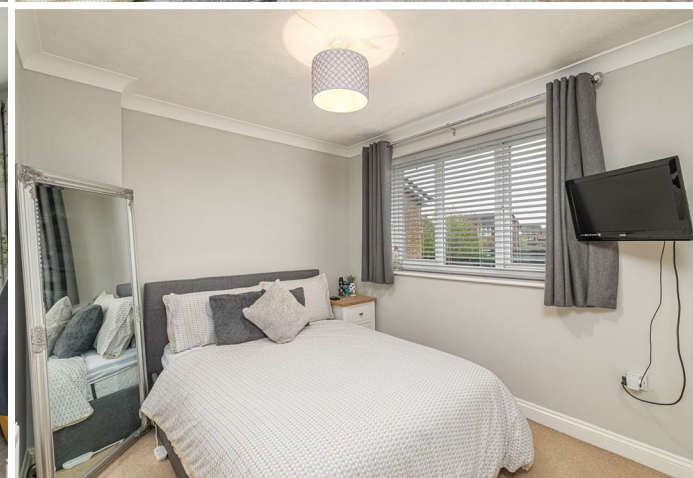
A Great First Step! This superb two bedroom semi detached property is situated in a sought after cul-de-sac location and has been much improved . An ideal first home, features include an entrance porch, cosy living room, contemporary kitchen/breakfast room, two double bedrooms and a fabulous refitted first floor shower room. Outside there is a gravelled frontage with a driveway providing off road parking for two vehicles, whilst to the rear is a paved patio leading to an established lawned garden. Viewing is highly recommended. Offered with NO CHAIN.

Council Tax Band - B
EPC Rating - D

The front door opens into an entrance porch which has a door leading into the living room. The living room is well presented with a window to the front, open plan stairs rising to the first floor and a door leading through to the kitchen. The kitchen/breakfast room is fitted with a contemporary range of units complete with breakfast bar. There is a window to the rear and a door leading out to the rear garden.

The first floor landing has doors leading to the upstairs rooms. The master bedroom is a double room with a window to the rear and fitted wardrobe. Bedroom two is a double room with a window to the front. The family bathroom has a window to the side and has been superbly refitted with a contemporary suite incorporating a shower over the bath.

The property has a lawned frontage with a driveway providing off road parking for two vehicles. there is gated access to the rear. The rear garden offers a paved patio with a lawned garden that is fully enclosed by timber fencing.



2  bedrooms 1  bathrooms
1  receptions

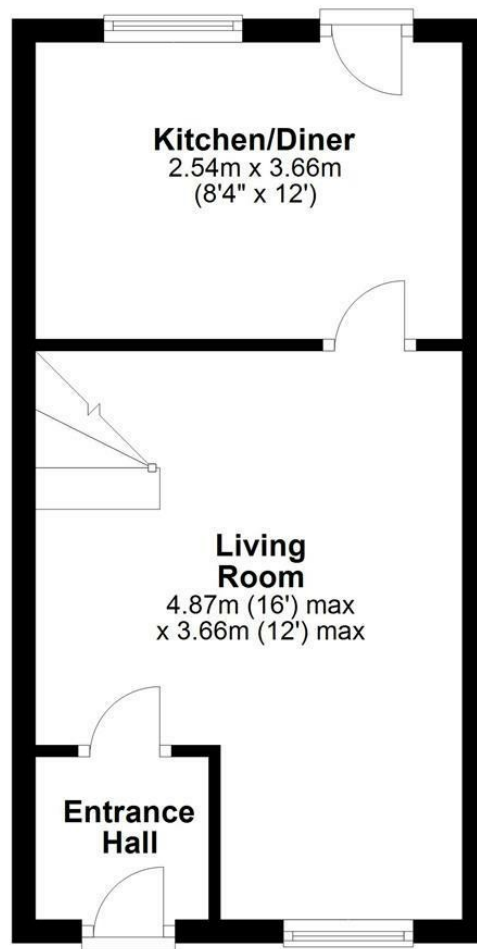
Council Tax Authority: North Northants

Tenure: Freehold

Energy Efficiency Rating: 62

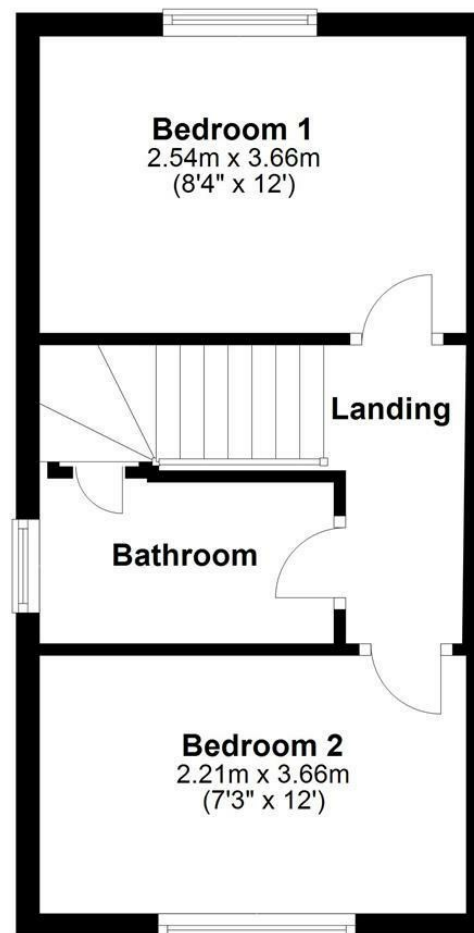
Ground Floor

Approx. 27.4 sq. metres (295.4 sq. feet)



First Floor

Approx. 27.4 sq. metres (295.4 sq. feet)



Total area: approx. 54.9 sq. metres (590.8 sq. feet)