



# ROCHESTER ROAD

Corby, Northamptonshire, NN18 8PN | £220,000



HOWE  
RESIDENTIAL

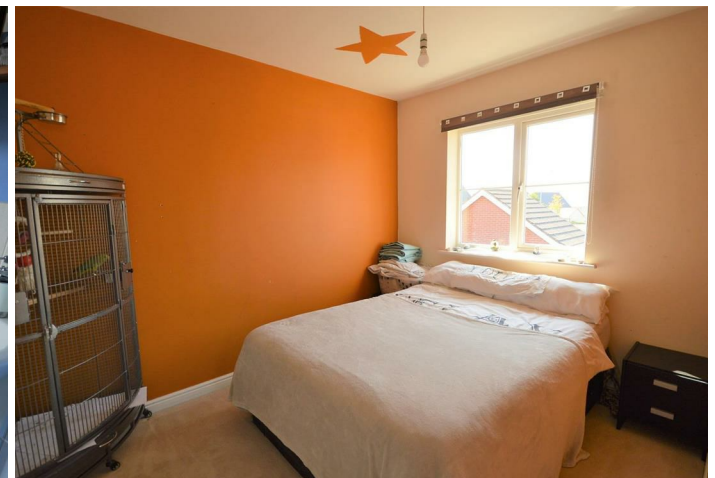
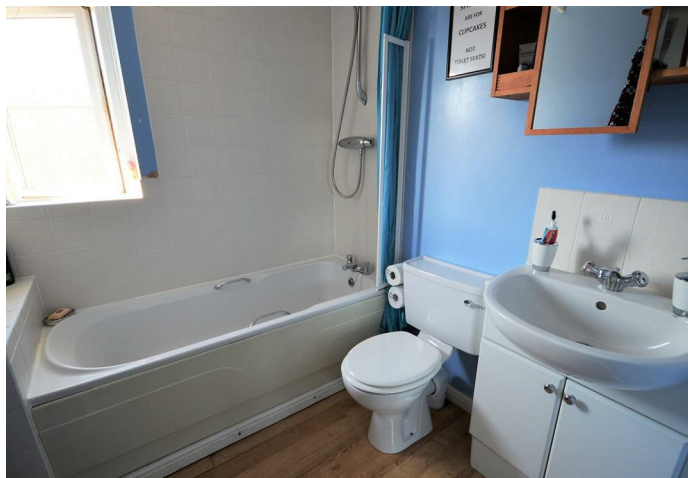






# Rochester Road, Corby, NN18 8PN

A Step On The Ladder. Situated in a secluded cul-de-sac on the ever popular Oakley Vale development is this superb two bedroom end of terrace property which would make an ideal first time buy. Features include a downstairs WC, living room and contemporary kitchen/breakfast room. Upstairs there are two generous double bedrooms and a contemporary family bathroom. Outside there are gardens to front and rear, parking space and a GARAGE. Recommended.



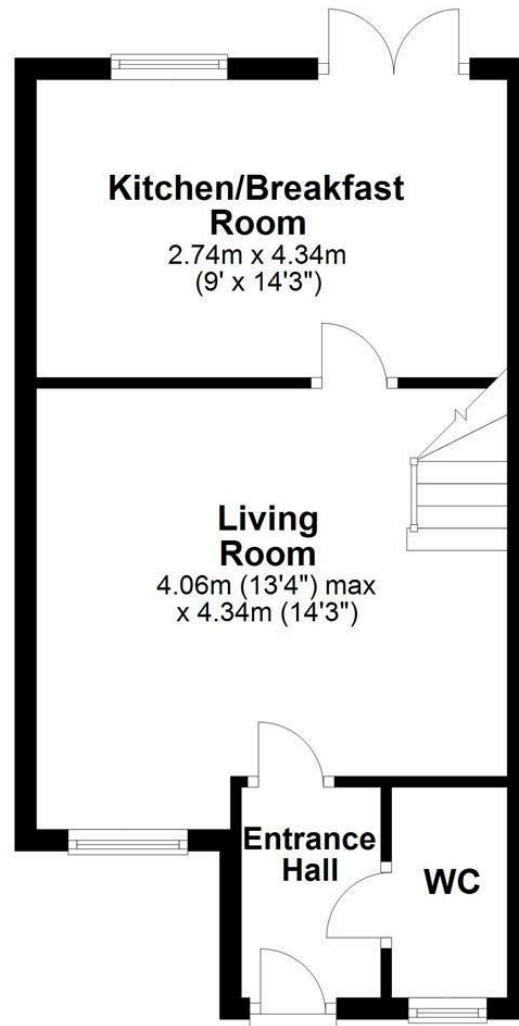
2  bedrooms 1  bathrooms  
1  receptions

**Council Tax Authority:**

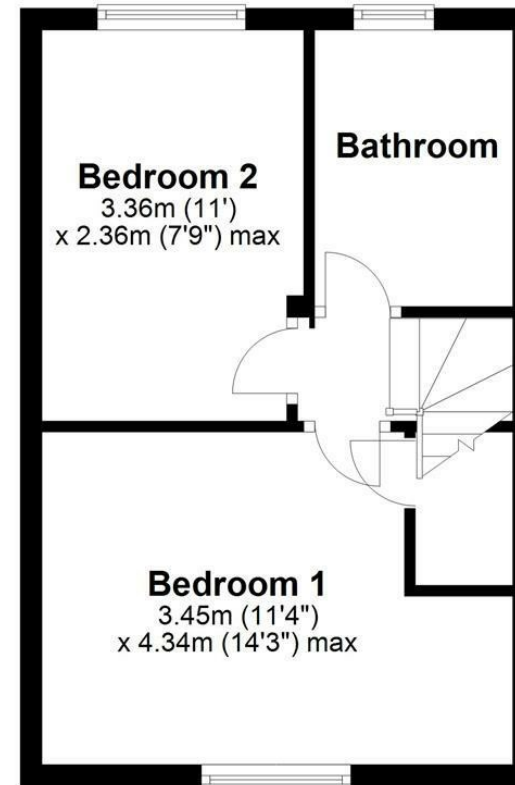
**Tenure:** Freehold

**Energy Efficiency Rating:** null

## Ground Floor



## First Floor



**HOWE**  
RESIDENTIAL

e: [sales@howeresidential.co.uk](mailto:sales@howeresidential.co.uk) t: 01536 268844 [www.howeresidential.co.uk](http://www.howeresidential.co.uk)

Howe Residential & their clients give notice that: **1.** These sales and particulars do not constitute any part of an offer of contract, and are for the guidance of prospective purchasers only and should not be relied on as statements of fact. **2.** No representations are made in these particulars as to the condition of the property or as to whether any service or facilities are in good working order. **3.** All Measurements are approximate.