



WATSON CLOSE

Corby, NN14 4BL

£925 Per Calendar Month

Premier

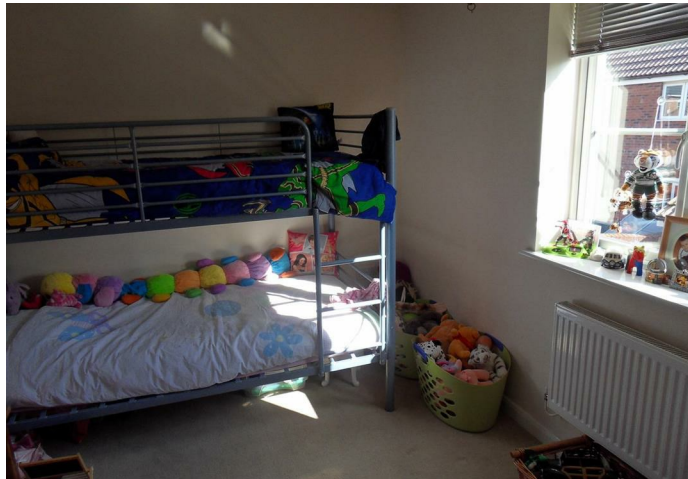
LETTINGS NORTHANTS




This fabulous three storey three bedroom property is available now. Situated close to the Earlstrees Industrial Estate, the property benefits from double glazing, gas radiator heating and a single garage. The accommodation comprises - entrance hall, w/c, lounge/dining room to the first floor landing there are two bedrooms and a family bathroom. To the second floor there is the master bedroom boasting an en-suite and built in wardrobes. To the exterior there is a lawned rear garden with access to the garage.



Watson Close, Corby, NN17 4AN

This fabulous three storey three bedroom property is available early January 2023. Situated close to the Earlstrees Industrial Estate, the property benefits from double glazing, gas radiator heating and a single garage. The accommodation comprises - entrance hall, w/c, lounge/dining room to the first floor landing there are two bedrooms and a family bathroom. To the second floor there is the master bedroom boasting an en-suite and built in wardrobes. To the exterior there is a lawned rear garden with access to the garage. No Pets or Smokers



3  bedrooms 2  bathrooms
1  receptions

Council Tax Authority:

Tenure:

Energy Efficiency Rating:

Covering Northamptonshire

01536 684449 premierlettingsnorthants.co.uk

Disclaimer: These particulars should not be relied upon as statements or representations of fact and do not form part of any offer or contract.
Any areas and measurements of distance are approximate. The text, images and plans are intended for guidance only and are not comprehensive.

Premier
LETTINGS NORTHANTS