



# HUNTINGDON CLOSE

Corby, NN14 4BL

£1,300 Per Calendar Month

**Premier**

LETTINGS NORTHANTS



A beautifully presented modern four bedroom detached residence set at the end of this popular cul-de-sac within Oakley Vale. The property is spacious throughout with the addition of a double glazed conservatory and high quality re-fitted kitchen and bathroom. The living accommodation includes: entrance hall, lounge, kitchen/breakfast room, dining room, conservatory, utility room, cloakroom, landing, master bedroom with en-suite, 3 further bedrooms and family bathroom. Further features include double glazing and gas radiator central heating. Outside are lawned front and rear gardens and double width driveway leading to a Garage. An early viewing is highly recommended! AVAILABLE NOW .No Smokers/No Pets





# Huntingdon Close, Corby, NN18 8RG

This modern four bedroom detached residence is set at the end of this popular cul-de-sac within Oakley Vale and is available from mid January 2023. The property is spacious throughout with the addition of a double glazed conservatory and re-fitted kitchen and bathroom. The living accommodation includes: entrance hall, lounge, kitchen/breakfast room, dining room, conservatory, utility room, cloakroom, landing, master bedroom with en-suite, 3 further bedrooms and family bathroom. Further features include double glazing and gas radiator central heating. Outside are lawned front and rear gardens and double width driveway leading to a Garage. No Smokers/No Pets

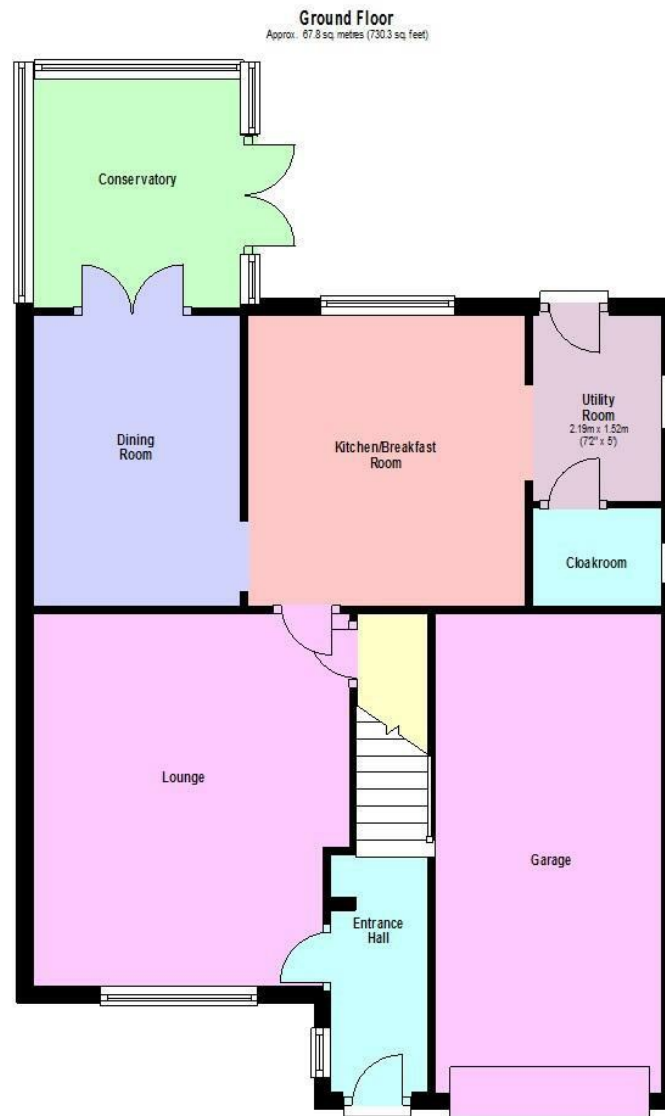


4  bedrooms 1  bathrooms  
2  receptions

**Council Tax Authority:** North Northants

**Tenure:**

**Energy Efficiency Rating:**



**Covering Northamptonshire**

01536 684449    [premierlettingsnorthants.co.uk](http://premierlettingsnorthants.co.uk)

Disclaimer: These particulars should not be relied upon as statements or representations of fact and do not form part of any offer or contract. Any areas and measurements of distance are approximate. The text, images and plans are intended for guidance only and are not comprehensive.

**Premier**  
LETTINGS NORTHANTS